

CENTRIFUGAL AIR AND DIRT SEPARATORS FOR LIQUID SYSTEMS AS and AS/F



DESCRIPTION

The AS series centrifugal air and dirt separators are designed to be used in the flow line of a hydronic heater or cooling system. The operation is based on the principle of centrifugal force, instead of relying on low velocity separation, offering the advantage of efficient separation in a smaller form factor.

The inside strainer protects against any dirt present in the system such as sand, welding residues and other foreign matter. The strainer screen position has a particular advantage compared with external pipe strainers since dirt is removed from the water flow and is collected in the bottom of the unit, avoiding pressure losses.

MAIN FEATURES

- No moving parts.
- Integrated strainer.
- Maximum separation efficiency with minimum space requirements.

OPTIONS: Different connections and ratings on request.

USE: To remove air and dirt in hydronic heating, cooling and pumping systems.

AVAILABLE MODELS:

- AS/S - carbon steel body.
- AS/SS - stainless steel body.
- AS/SF - carbon steel with strainer.
- AS/SSF - stainless steel with strainer.

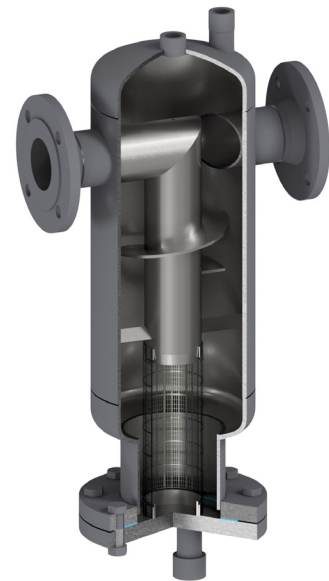
SIZES: DN 32 to DN 300.

CONNECTIONS:

- Flanged EN 1092-1 PN 16.
- Flanged ASME B16.5 Class 150.
- Standard PN 16 DN 65 flanges are supplied with 4 holes. 8 holes, according to EN 1092, on request.
- Female threaded ISO7 Rp or NPT, on request.

INSTALLATION:

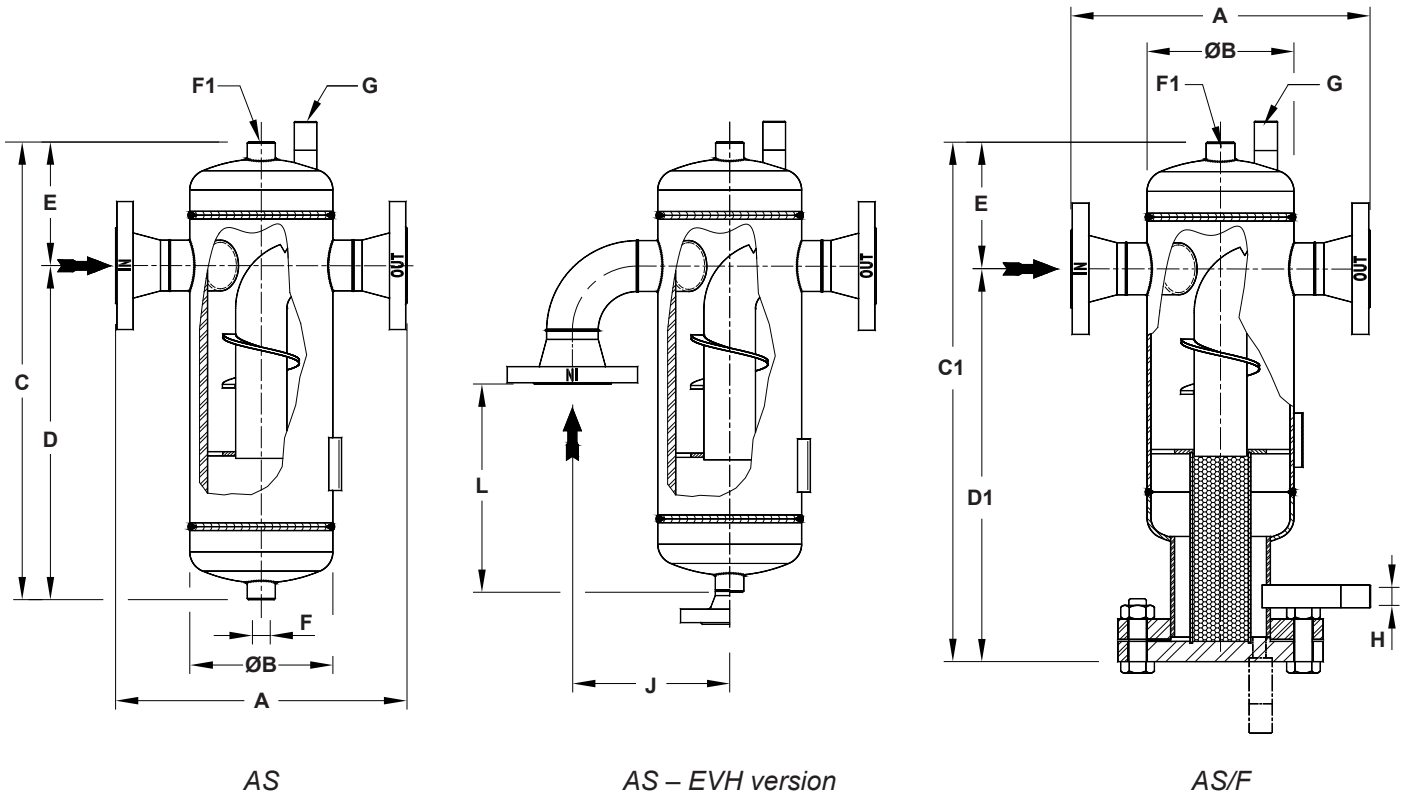
- The AS separators should be installed at the highest temperature and lowest pressure points, where solubility is lower.
- Ideally, they should be installed after boilers or heat exchangers, before chillers and pump suction.
- Horizontal installation, always with the drain discharge pointing downwards.
- The installation of an ADCA AE series air eliminator is recommended, to remove the air.



CE MARKING – GROUP 2 (PED – European Directive)	
PN 16	Category
DN 32 to 300	SEP

LIMITING CONDITIONS	
PS – Maximum allowable pressure	10 bar
TS – Maximum allowable temperature	110 °C

Minimum operating temperature: -10 °C.
Design code: AD-Merkblatt.
Remark: Other conditions on request.



APPROXIMATE DIMENSIONS (mm) *

SIZE	PN 16											CLASS 150	VOL. (L)	WGT. (kg)
	A	ØB	C	C1	D	D1	E	F **	F1 **	G **	H **	A		
DN 32	260	140	395	495	285	385	110	3/4"	1/2"	1/2"	3/4"	290	6	13
DN 40	260	140	435	535	325	425	110	3/4"	1/2"	1/2"	3/4"	294	6,7	14,3
DN 50	310	168	505	605	385	485	120	3/4"	1/2"	1/2"	3/4"	341	11,7	21
DN 65 ***	380	219	550	670	410	530	140	1"	3/4"	3/4"	1"	430	19,8	31,5
DN 80	400	219	610	730	462	582	148	1"	3/4"	3/4"	1"	440	27	40
DN 100	485	273	715	835	528	648	187	1 1/4"	3/4"	3/4"	1 1/4"	533	38	59,8
DN 125	535	324	845	995	630	780	215	1 1/4"	1"	1"	1 1/4"	605	54	84
DN 150	565	356	962	1131	692	841	290	1 1/2"	1"	1"	1 1/2"	635	79	161
DN 200	605	406	1170	1320	880	1030	290	1 1/2"	1"	1"	1 1/2"	685	146	202
DN 250	720	508	1540	1710	1140	1310	400	1 1/2"	1"	1"	1 1/2"	784	288	330
DN 300	840	610	1700	1870	1172	1342	528	1 1/2"	1"	1"	1 1/2"	913	412	475

F – Drain connection; F1 – Automatic air eliminator connection; G – Manual start-up air drain connection; H – Strainer drain connection.
 * For certified values, consult factory. Volume and weight refer to AS/SF PN 16 flanged version. Other versions may have slightly different values.
 ** As standard, in separators manufactured with EN 1092-1 flanges, these connections are female threaded ISO 7 Rp. In models with ASME B16.5 flanges, these connections are female threaded NPT. For the drains, alternative EN 1092-1 or ASME B16.5 flanged connections can be supplied (ASME on the same class as main connections).
 *** Standard PN 16 DN 65 flanges are supplied with 4 holes. 8 holes, according to EN 1092-1, on request.

MATERIALS	
DESIGNATION	MATERIAL
Body	EN 10216-2 / P235GH / 1.0325
Head	EN 10028-2 / P265GH / 1.0425
Inlet / Outlet pipe	EN 10216-2 / P235GH / 1.0325
EN flange	EN 10222-2 / P250GH / 1.0460
ASME flange	ASTM A105 / 1.0432
Socket	ASTM A105 / 1.0432
Internals	EN 10025-2 / S235JR / 1.0038

FLANGE CONNECTIONS			
RATING	SIZE	EN STANDARD	ASME STANDARD
PN 16	* DN 15 to 50	EN 1092-1 PN 40	ASME B16.5 Class 150
PN 16	DN 65 to 300	EN 1092-1 PN 16	ASME B16.5 Class 150

* Flanges EN 1092-1 PN 16 and PN 40, from DN 15 to DN 50, have the same number and size of holes.

EN 10204 3.1 certificate available if requested with the order.